

It's BiopSafe® /



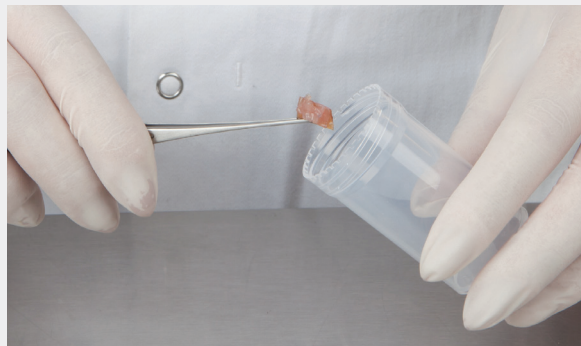
The BiopSafe® biopsy sample pot is designed to minimise risk of exposure to formalin and formaldehyde during any biopsy procedure.

Step 1



Unscrew the blue lid.

Step 2



Place the sample(s) in the pot.

Step 3



Screw the blue lid back in place. Ensure tight seal.

Step 4



Apply pressure to the button on the lid to release the formalin and cover the biopsy.

Step 5



Ensure the sample is fully covered.

Step 6



The sample is ready for transport.