

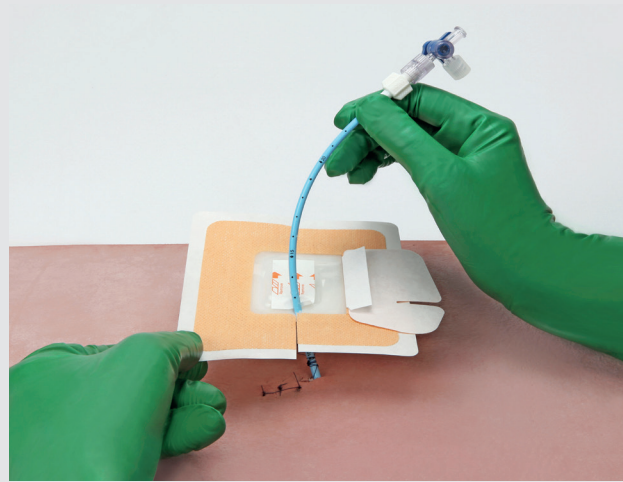
It's Drain-Lok

Steps for use

These instructions are to be used as a reference guide only. Please refer to the full instructions for use prior to using this product.

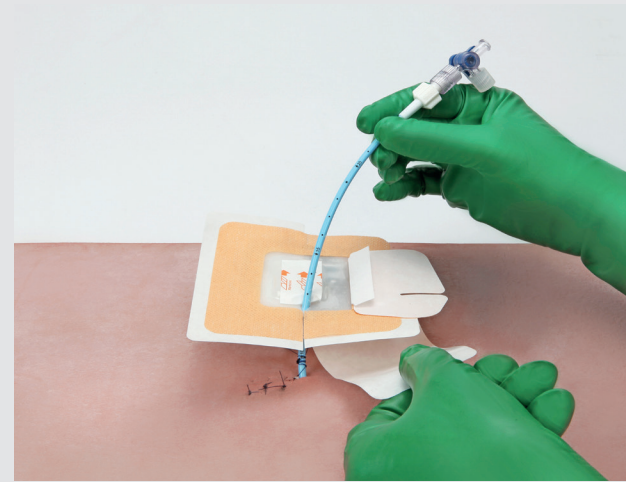
Fixing Instructions

Step 1.



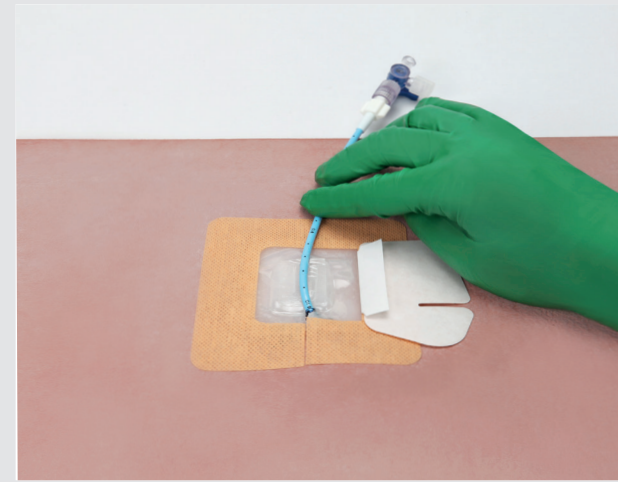
Open the slit for catheter insertion. Place Drain-Lok so catheter is positioned at the bottom of the slit.

Step 2.



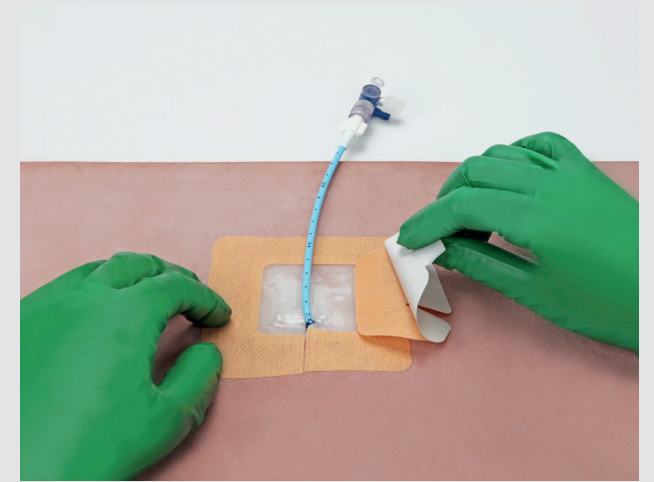
Remove the paper backing from underneath one half of the Drain-Lok.

Step 5.



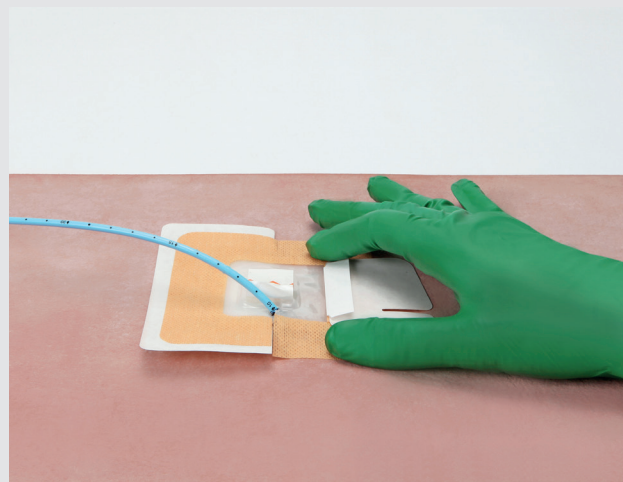
Remove the siliconized paper from the top middle of the Drain-Lok and place the catheter on the exposed adhesive area

Step 6.



Remove the paper backing from the top cover, using it to position the cover over the catheter.

Step 3.



Press the top of the dressing to affix to the skin

Step 4.



Remove the paper backing from underneath the other half of the Drain-Lok and press the top to secure adhesive

Step 7.



Press the top of the dressing to secure adhesive and affix catheter in place

Additional information?

If you would like further assistance with using our Drain-Lok, or need advice on how to order, please call us on: 0114 268 8880.