

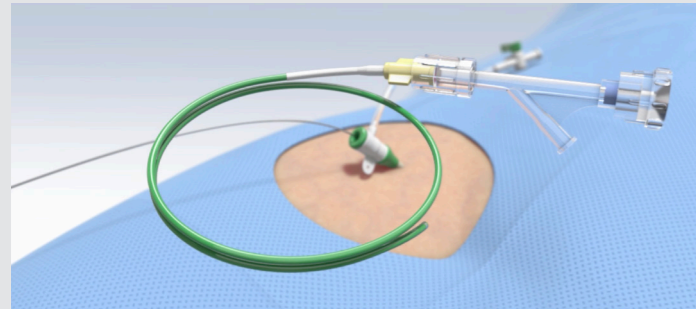
It's Shape Memory IMPEDE /

Steps for use

These instructions are to be used as a reference guide only. Please refer to the full instructions for use prior to using this product.

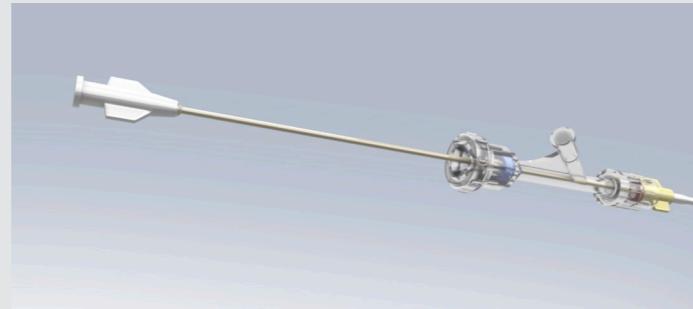


Step 1.



Use a standard access and delivery device.

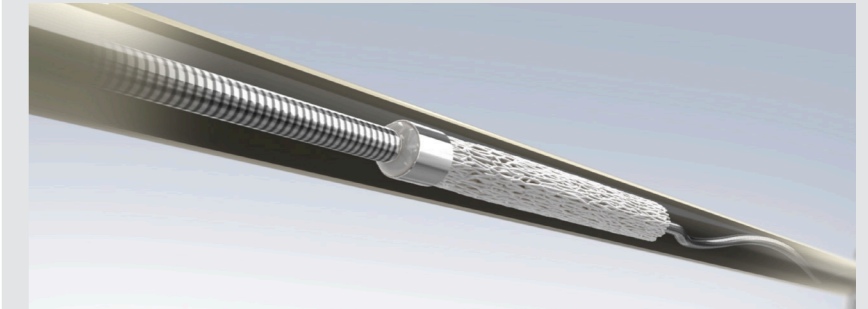
Step 2.



The IMPEDE embolisation plug is a pushable device. It is supplied in its crimped form and is preloaded in an introducer.

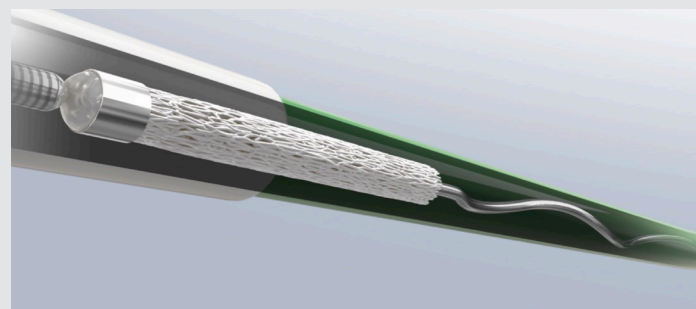
**PLEASE NOTE:
DO NOT FLUSH**

Step 3.



Use a guidewire to transfer the device into the catheter. You now have 1 minute working time to deploy the device.

Step 4.



Once in the catheter, use the guidewire to push the IMPEDE® towards the target vessel

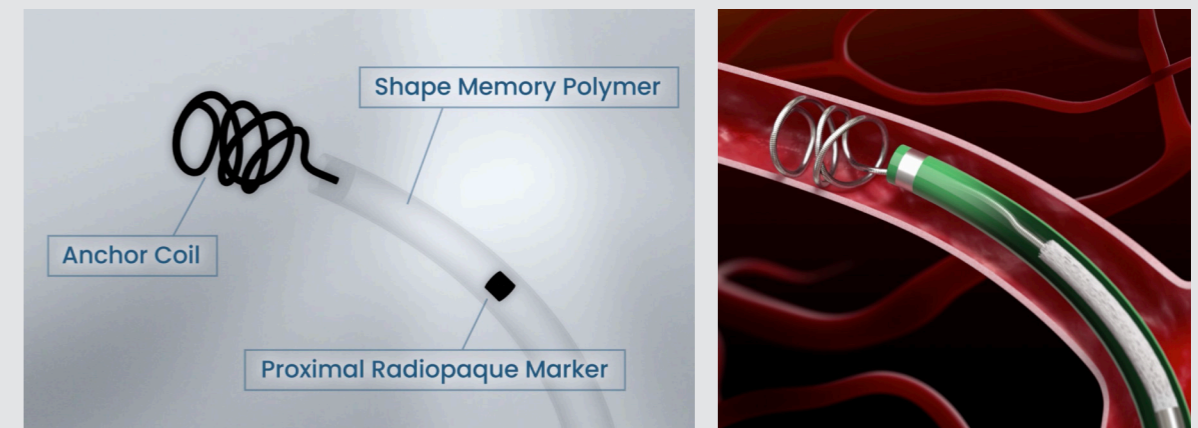
Step 5.



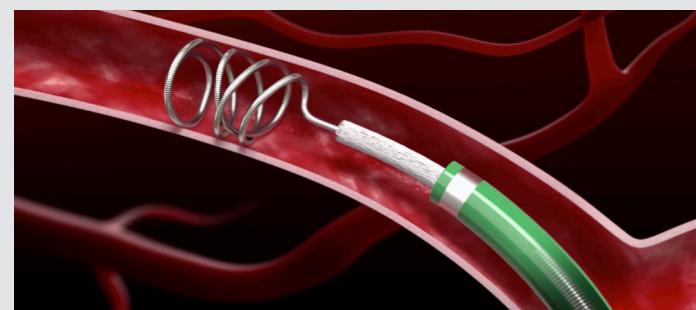
The device easily navigates tortuosity. If appropriate catheter can access target vessel, so can the device.

Step 6.

Deploy the anchor coil into the target vessel. Halt advancement of the guidewire.

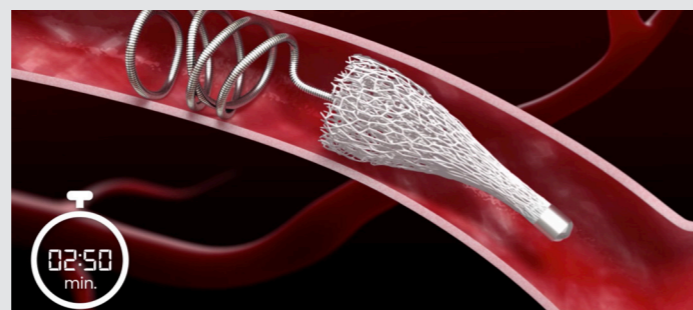


Step 7.



With the guidewire firmly in place, slowly retract the catheter to unsheathe the shape memory polymer plug.

Step 8.



Upon contact with blood, the shape memory plug will expand to embolise the vessel.

Step 9.



After approx. 5 minutes stasis & thrombosis begin as clots rapidly form within the porous polymer scaffold.

Step 10.



Check the vessel is embolised with a contrast injection and proceed with patient treatment as per standard of care.

Manufactured by



Distributed by UK Medical Ltd.

Additional information?

If you would like further assistance with using our Shape Memory range, or need advice on how to order, please call us on: 0114 268 8880.

UKMEDICAL®

It's Interventional.

ukmedical.com